

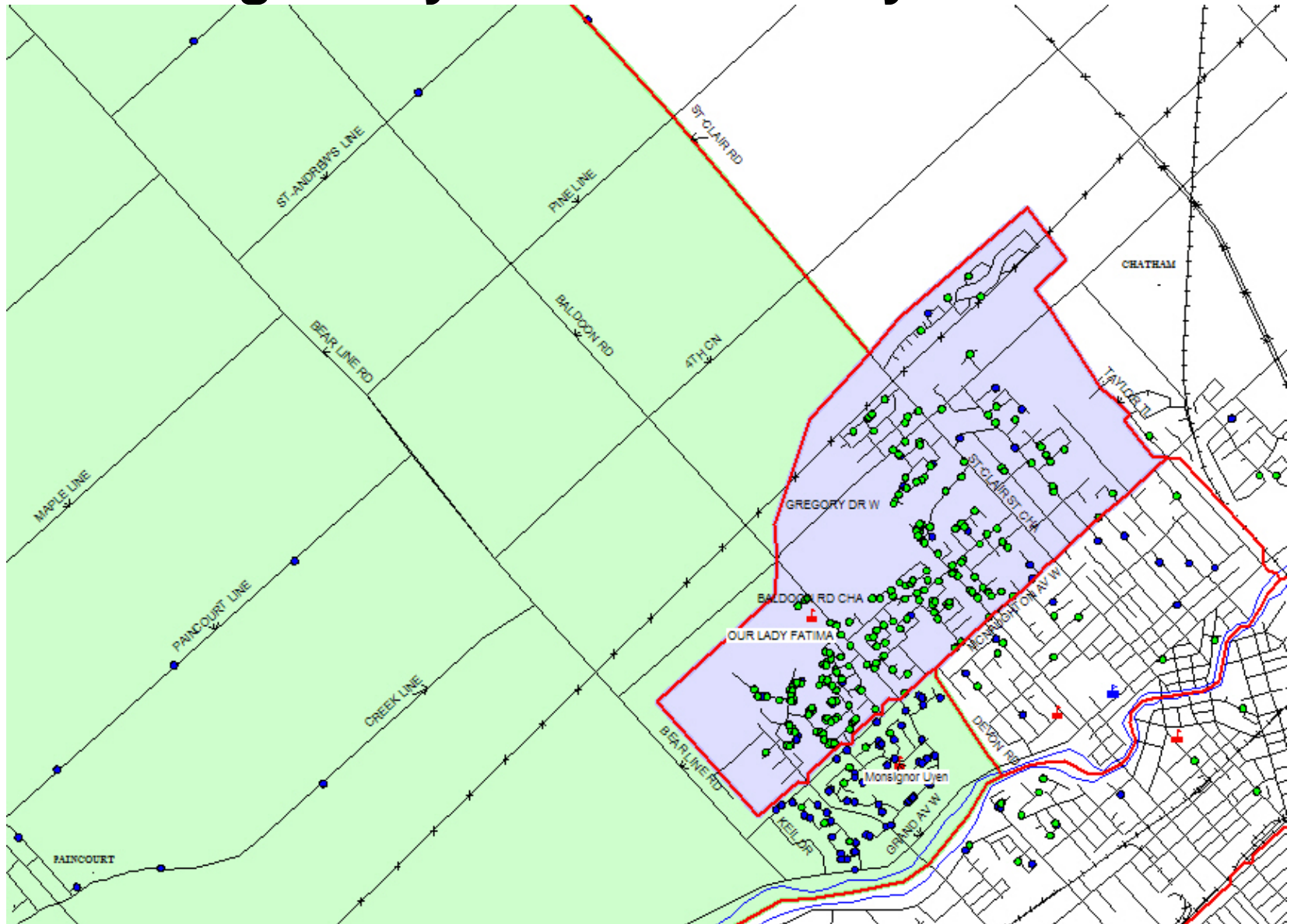
DEMOGRAPHICS



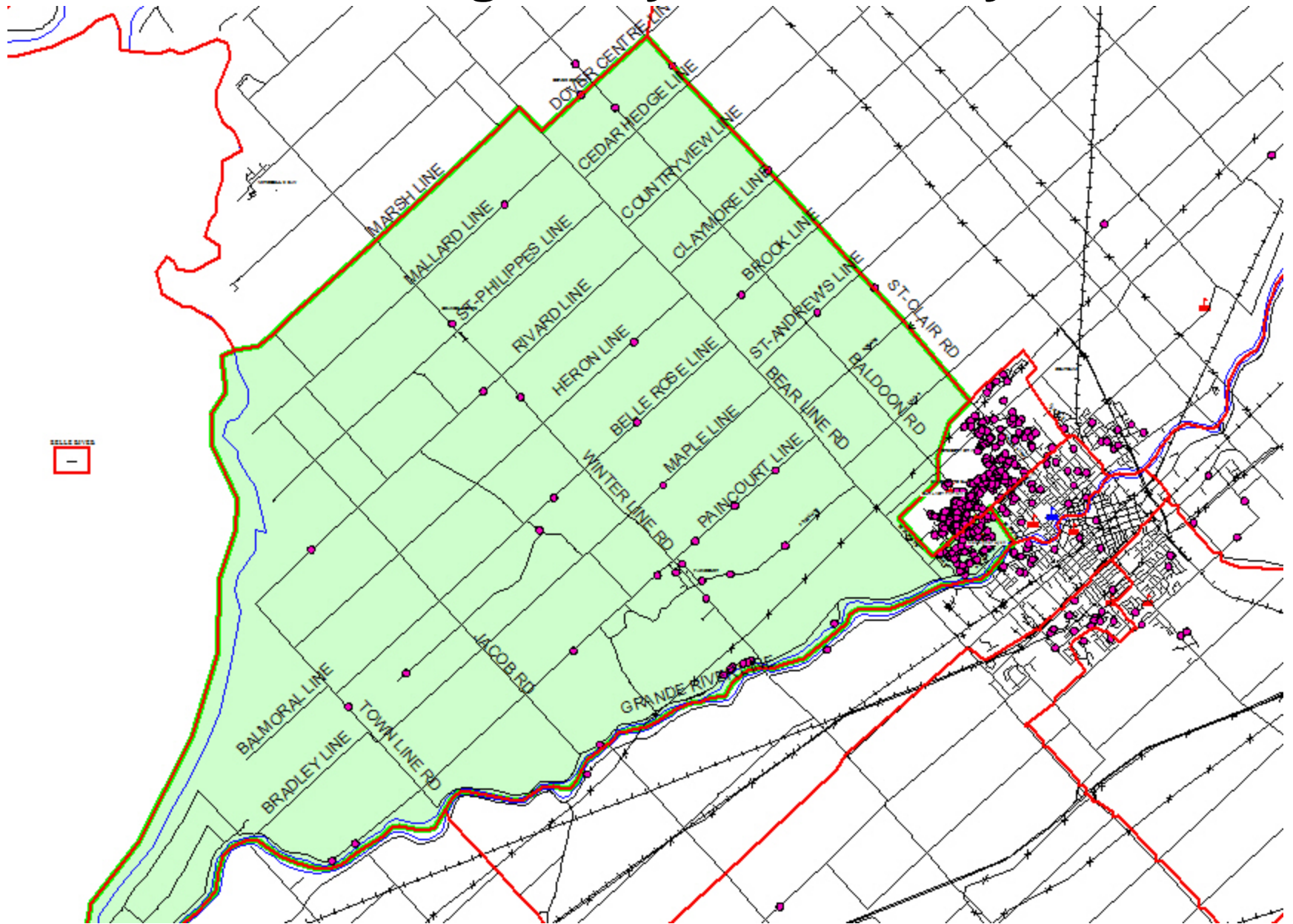
ST. CLAIR CATHOLIC
DISTRICT SCHOOL BOARD

Lighting the Way ~ Rejoicing in Our Journey

Current Boundaries Monsignor Uyen and Our Lady of Fatima



Monsignor Uyen Boundary



Definitions

- **FTE (full-time equivalent enrolment)**

The count of students is based on the percentage of time they attend school. A pupil enrolled in junior kindergarten or kindergarten is therefore counted as .50 or half-time.

Ministry grant calculations and the assignment of staff to schools are based on the FTE enrolment.



ST. CLAIR CATHOLIC
DISTRICT SCHOOL BOARD

Lighting the Way ~ Rejoicing in Our Journey

Definitions

- **OTG (Ministry on the Ground Capacity)**

Number of pupil places available in a school.

Loading factors to calculate elementary capacity:

JK/SK Classroom – 20

Grade 1-8 Classroom – 23

Special Education Rooms – 9

General Instructional Space (approx. 400 to 700 sq. ft) – 12



ST. CLAIR CATHOLIC
DISTRICT SCHOOL BOARD

Lighting the Way ~ Rejoicing in Our Journey

Facility Summaries

Monsignor Uyen

- OTG – 342.00
- 15 classrooms

- Eng Enrolment - 125
- Imm Enrolment - 140
- Total Enrolment – 265
- FTE – 258.50

Our Lady of Fatima

- OTG – 425.00
- 19 classrooms
(Note: 2 additional classrooms are currently lease by Best Start)
- Eng Enrolment - 314
- Enrolment – 111
- Total Enrolment - 425
- FTE – 372.00



ST. CLAIR CATHOLIC
DISTRICT SCHOOL BOARD

Lighting the Way ~ Rejoicing in Our Journey

Monsignor Uyen History of English Enrolment

	JK	SK	1	2	3	4	5	6	7	8	TOTAL	FTE
2007	14	13	6	24	20	17	17	21	27	24	183	169.50
2008	8	11	11	8	23	16	16	16	18	25	152	142.50
2009	11	8	11	11	9	23	16	19	17	18	143	133.50
2010	8	12	8	10	14	11	25	17	20	17	142	132.00
2011	5	8	12	10	10	12	11	23	17	18	126	119.50

Our Lady of Fatima History of English Enrolment

	JK	SK	1	2	3	4	5	6	7	8	TOTAL	FTE
2007	23	21	27	36	39	31	39	36	29	35	316	294.00
2008	20	25	26	25	37	44	34	38	32	29	310	287.50
2009	22	23	31	30	29	39	45	30	37	37	323	300.50
2010	24	25	27	31	32	28	38	43	35	37	320	295.50
2011	25	24	27	30	30	32	28	39	44	35	314	289.50

History of Immersion Enrolment

	Our Lady of Fatima				Monsignor Uyen						TOTAL	FTE
	JK	SK	1	2	3	4	5	6	7	8		
2007	44	30	39	13	37	22	32	25	30	23	295	258.00
2008	32	42	27	33	14	34	22	26	25	31	286	249.00
2009	42	28	36	25	28	14	33	23	27	24	280	245.00
2010	26	38	23	32	19	27	14	30	23	27	259	227.00
2011	28	29	37	17	30	19	25	13	30	22	250	221.50

Current & Historical Enrolment

	MOE CAPACITY	2007	2008	2009	2010	2011	Current % Occupied	2011 Available Pupil Places
OLOF-ENG		294.00	287.50	300.50	295.50	289.50		
OLOF-IMM		89.00	97.00	96.00	87.00	82.50		
OLOF-TOTAL	425.00	383.00	384.50	396.50	382.50	372.00	87.5%	53.00
MU-ENG		169.50	142.50	133.50	132.00	119.50		
MU-IMM		169.00	152.00	149.00	140.00	139.00		
MU-TOTAL	342.00	338.50	294.50	282.50	272.00	258.50	75.6%	83.50
TOTALS	767.00	721.50	679.00	679.00	654.50	630.50	82.2%	136.50

Monsignor Uyen English Enrolment Projections

	JK	SK	1	2	3	4	5	6	7	8	TOTAL	FTE
2012	6	5	8	13	11	10	12	12	24	16	117	111.50
2013	4	6	5	8	15	11	10	13	12	23	107	102.00
2014	5	4	6	5	9	15	11	11	13	12	91	91.00
2015	6	5	4	6	6	9	15	12	11	13	87	87.00
2016	6	6	5	4	7	6	9	16	12	11	82	82.00

Projected Enrolment

(assuming no changes to boundary, with 3-yr avg progression rate)
 (includes impact of FDK implementation in 2014-15)

	MOE CAPACITY	2012	2013	2014	2015	2016	Current % Occupied	2016 Available Pupil Places
OLOF-ENG		291.00	281.00	300.00	309.00	312.00		
OLOF-IMM		85.00	73.00	98.00	98.00	98.00		
OLOF-TOTAL	425.00	376.00	354.00	398.00	407.00	410.00	96.5%	15.00
MU-ENG		111.50	102.00	91.00	87.00	82.00		
MU-IMM		128.00	123.00	127.00	119.00	117.00		
MU-TOTAL	342.00	239.50	225.00	218.00	206.00	199.00	58.2%	143.00
TOTALS	767.00	615.50	579.00	616.00	613.00	609.00	79.4%	158.00